

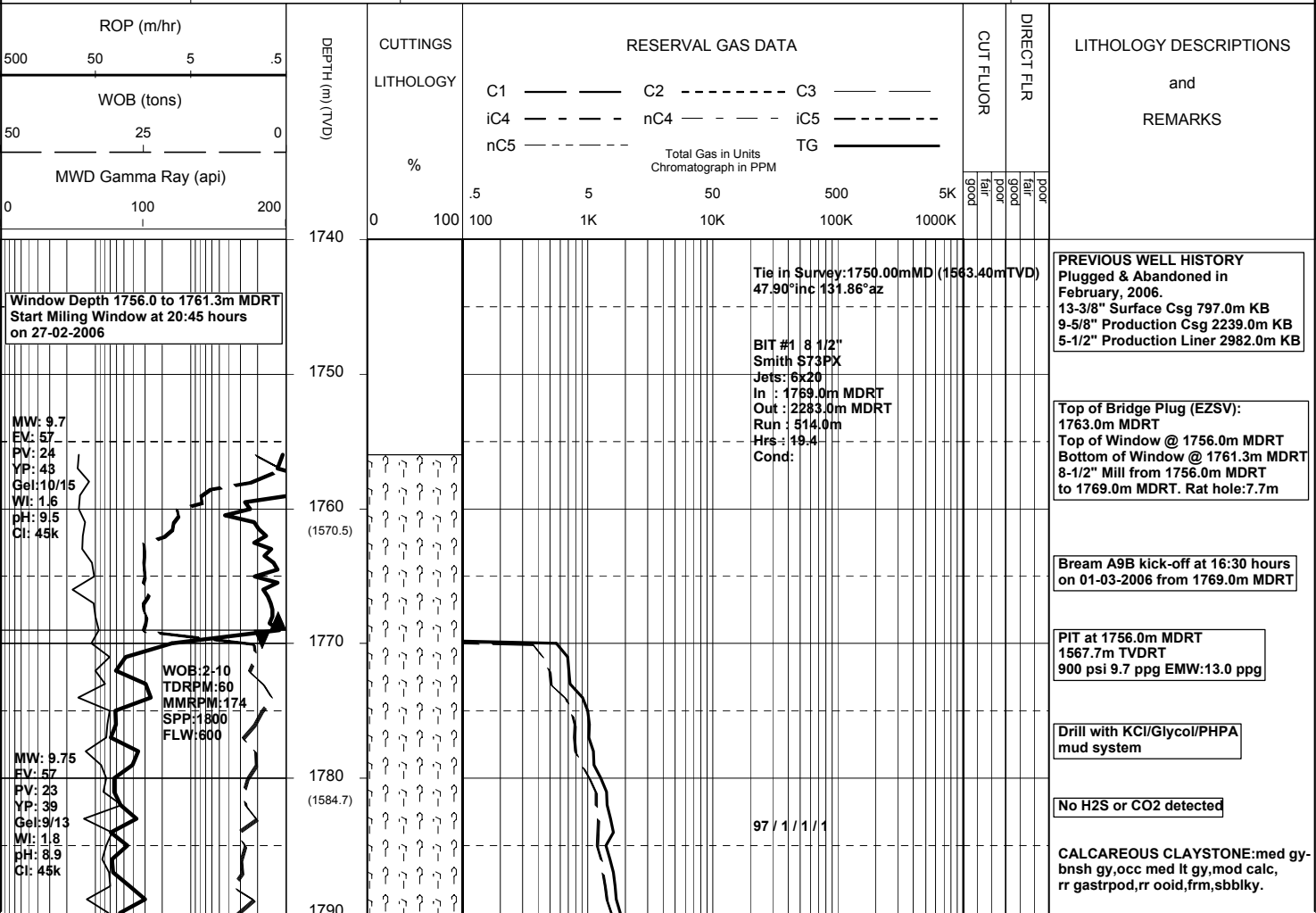
MASTERLOG

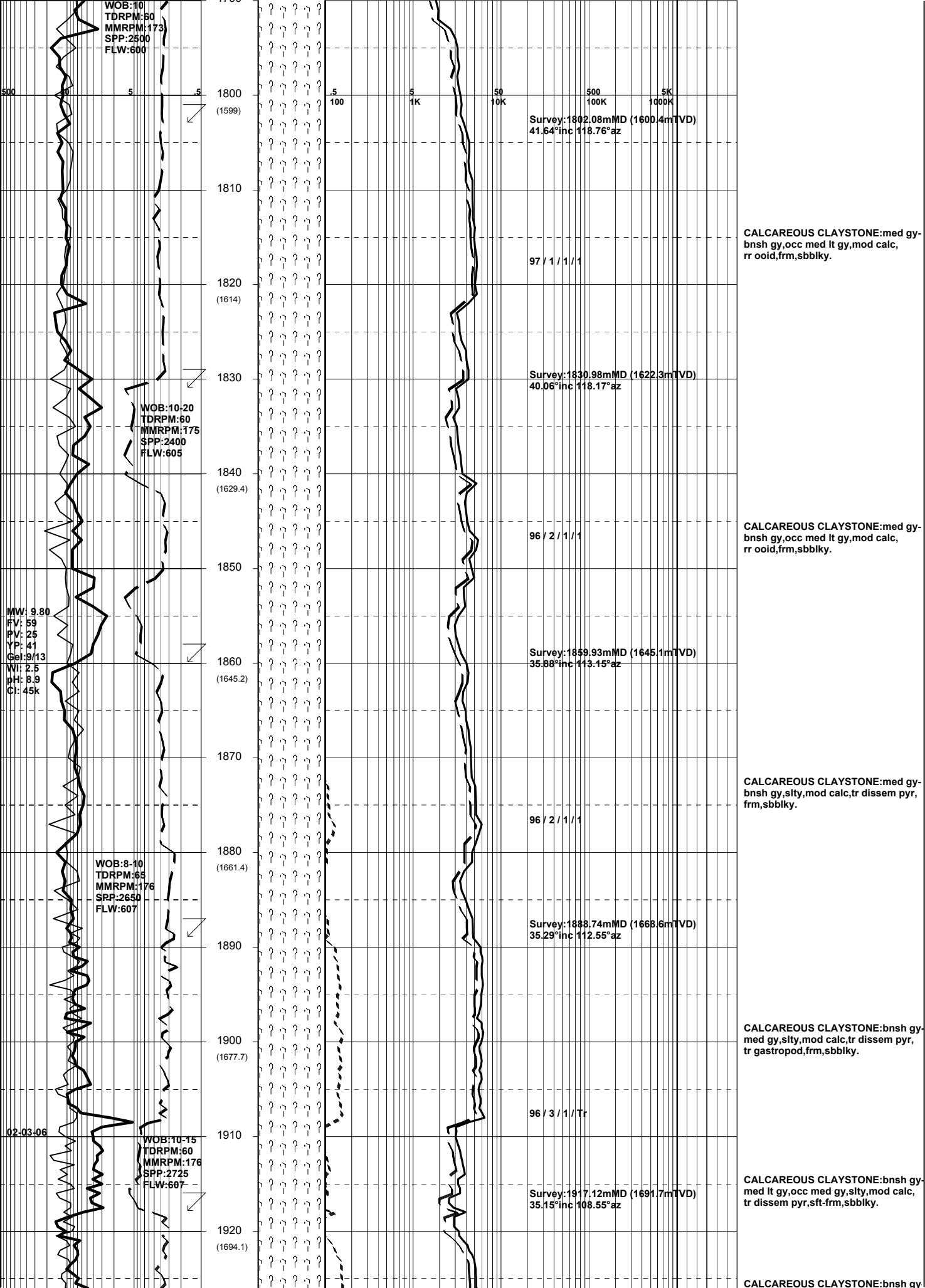
BMA A9B

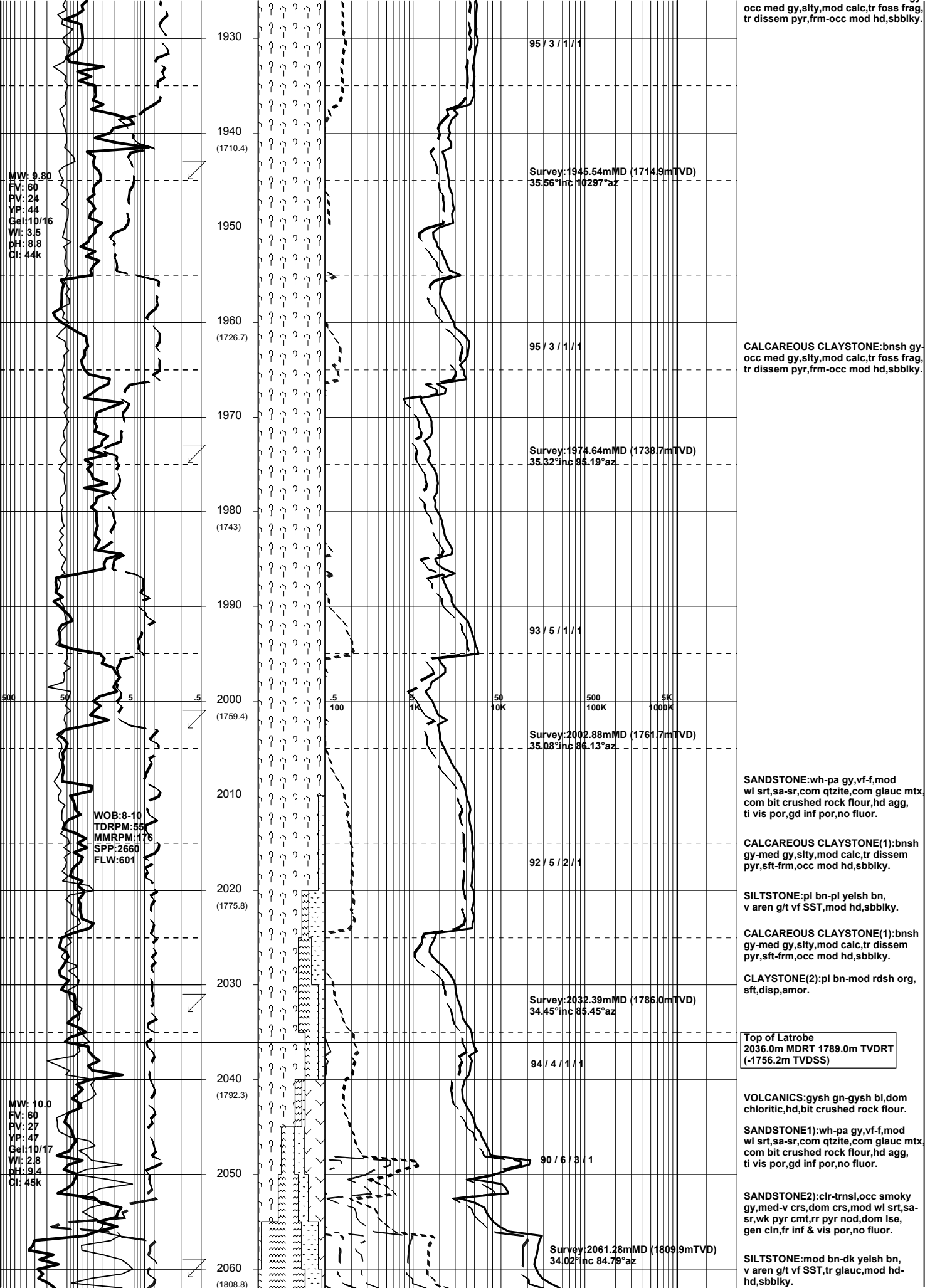


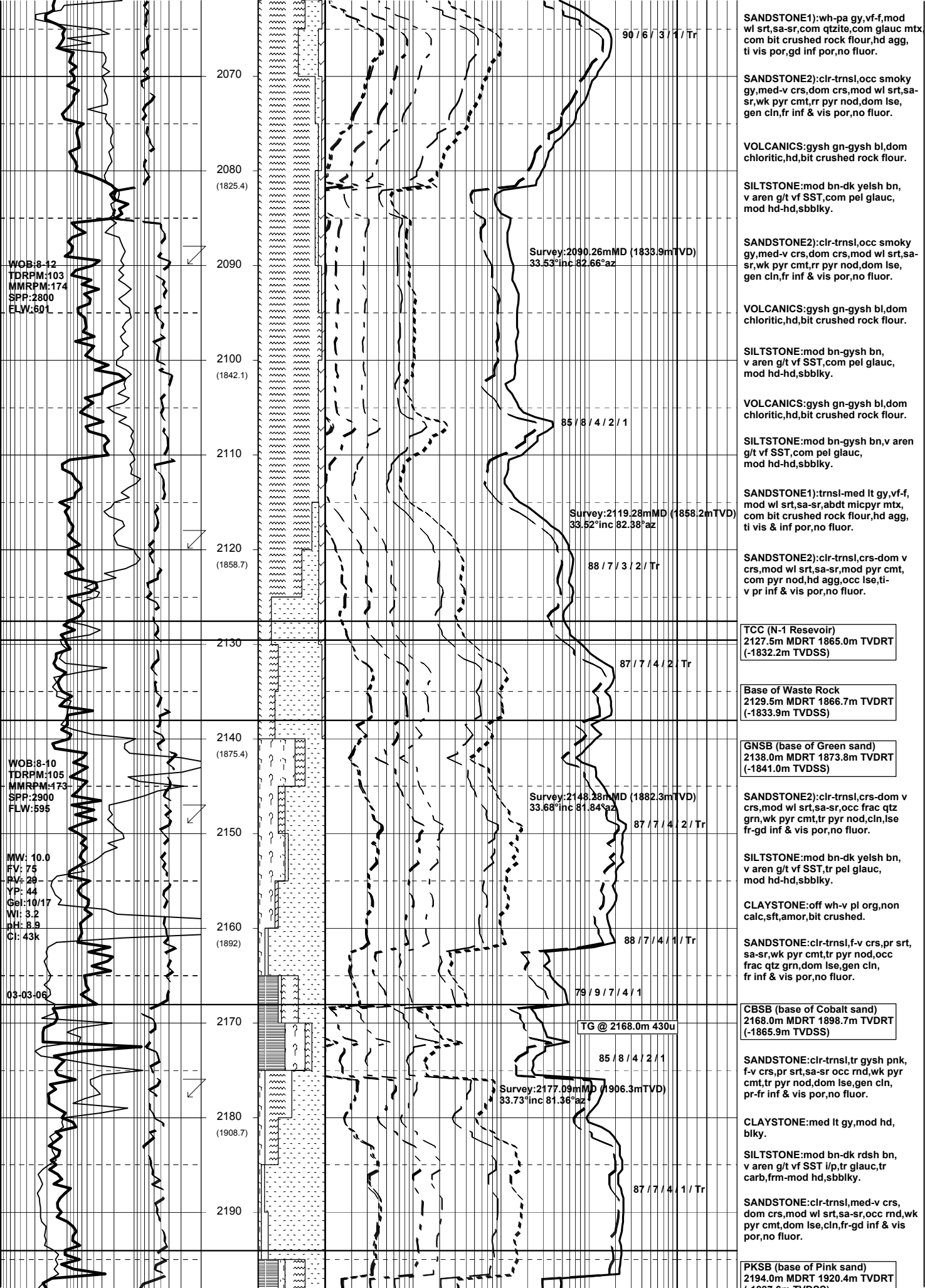
GENERAL	POSITION	HOLE / CASING INFO	DATE / DEPTH	ENGINEERS
Country : AUSTRALIA	GDA Co-ord X : 147 46 20.685E	8-1/2" Hole to 2283.0m MDRT	Kick Off Date : 01-03-2006	Noel Elliott
Permit : VIC L13	GDA Co-ord Y : 38 29 58.800S		Total Depth Date : 03-03-2006	Mark Smith
Field : Bream	MGA Co-ord X : 567353.50mE	13-3/8" Surface Csg at 797.0m MDRT	Total Depth : 2283.0m MDRT	
Basin : GIPPSLAND	MGA Co-ord Y : 5738460.92mN	9-5/8" Whipstock at 1756.0m MDRT	True Vertical Depth : 1994.35m TVDRT	
Well Type : DEVELOPMENT	RT to MSL : 32.82m	7" Production Csg at	Log Scale : 1/ 500	
Rig Name : NABORS 453	RT to Sea Bed : 92.22m			

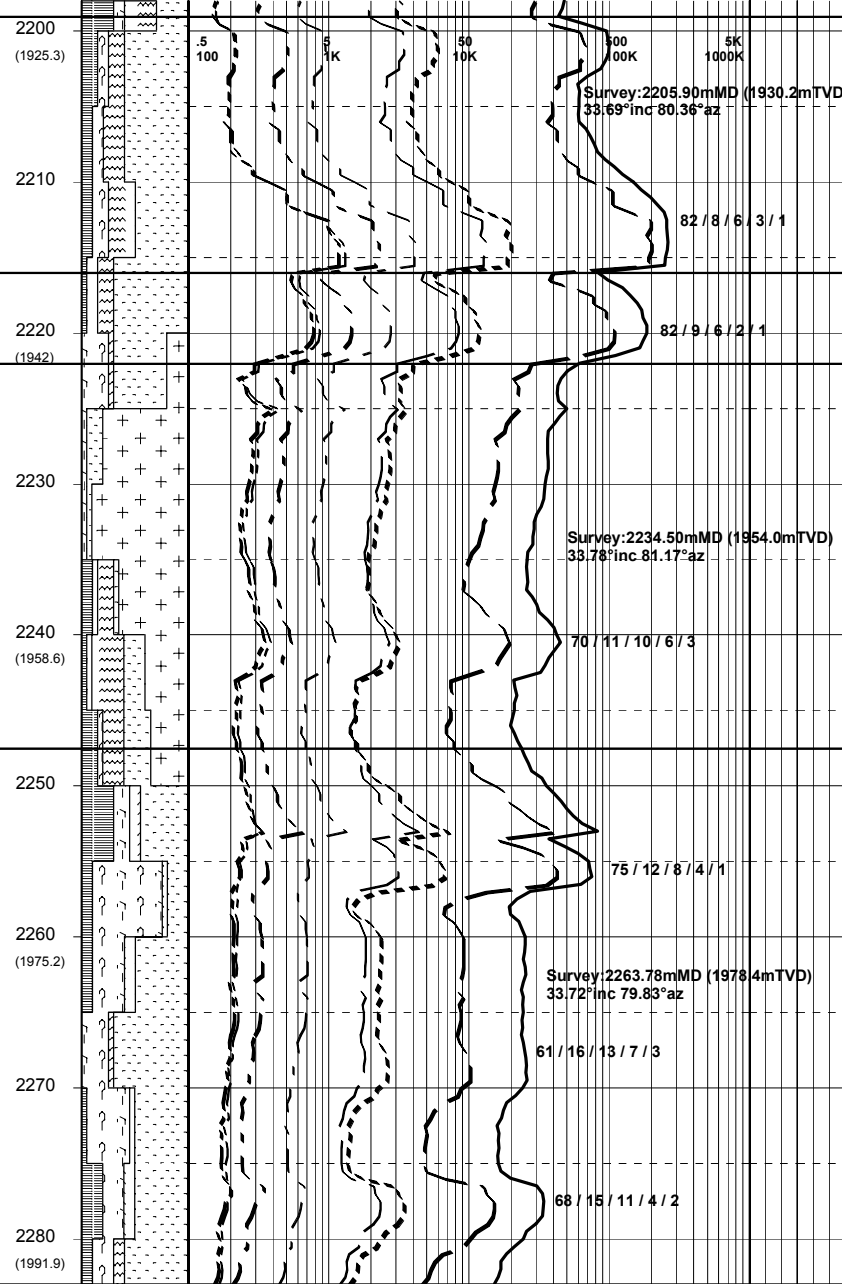
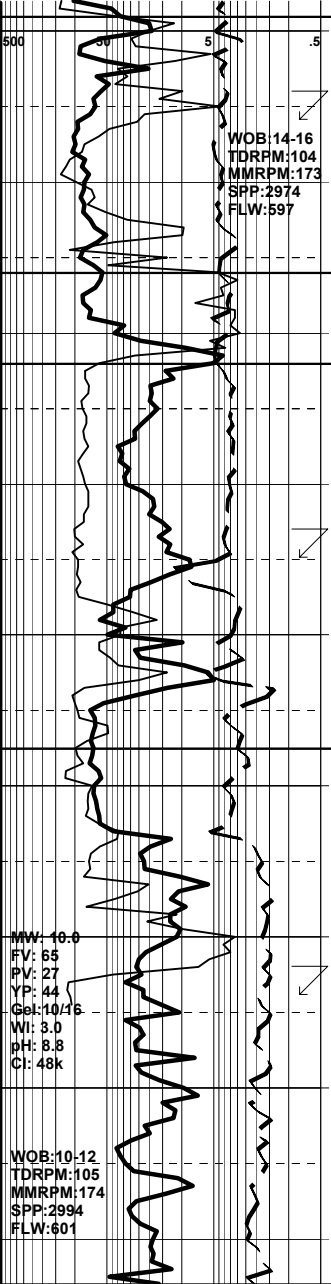
ABBREVIATIONS	LITHOLOGY LEGEND	ENGINEERING LEGEND
MW Mud Weight FV Funnel Viscosity PV Plastic Viscosity YP Yield Point Gel Gel Strength WL Water Loss KCl Potassium Chloride Cl Chlorides Incl Inclination Az Azimuth	WOB Weight on Bit (klbs) RPM Rotations Per Min FLW Flow Rate (gpm) SPP Pump Pressure (psi) RR Re-Run Bit TG Trip Gas CG Connection Gas BG Background Gas DGP Drilled Gas Peak MM Mud Motor	CASING SHOE LINER HANGER BIT CHANGE DEVI. SURVEY SWC UNRECOV SIDEWALL CORE CORE
	CLAYSTONE SILTSTONE SST: F - V FINE SST: MEDIUM SST: COARSE SHALE	WIRELINE LOGS MDT POINTS: PRESSURE ONLY SAMPLE SEAL FAILURE TIGHT
	MARL LIMESTONE DOLOMITE CHERT CONGLOMERATE COAL	
	BRYOZOA RADIOLARITES ECHINOIDS CORALS FORAMINIFERA LITHIC FRAGMENT	
	CARB FRAGMENT QUARTZITE INTRUSIVES GLAUCONITE PYRITE CEMENT	











(-1887.6m TVDSS)

MVSB (base of Mauve sand)
 2199.0m MDRT 1924.5m TVDRT
 (-1891.7m TVDSS)

COAL:bnsh blk-blk,ea-sbvit,frm-mod hd,brit,sbblky-sbfiss,arg,wdy txt,slty g/t carb SLTST.

SANDSTONE:clr-trnsl,med-dom v crs,mod wl srt,sa-sr,wk pyr cmt, tr pyr nod,lse,cln,fr-gd inf & vis por,no fluor.

CYSB (base of Cyan sand)
 2216.0m MDRT 1938.7m TVDRT
 (-1905.9m TVDSS)

SILTSTONE:gysh bn-dk yelsh bn,v aren,carb i/p,frm-mod hd,sbblky.

SANDSTONE:clr-trnsl,f-v crs,pr srt,sa-sr,wk pyr cmt, tr pyr nod,dom lse, gen cln,pr-fr inf & vis por,no fluor.

Igneous Intrusives
 2222.0m MDRT 1943.7m TVDRT
 (-1910.9m TVDSS)

VOLCANICS:pl bl gn-pl gn-lt gy, 50% qtz,com bit crushed rock flour, inf hd.

P Asperopoulos Coal
 2247.5m MDRT 1964.9m TVDRT
 (-1932.1m TVDSS)

SANDSTONE:clr-trnsl,f-v crs,pr srt,sa-sr,wk pyr cmt,dom lse, gen cln,fr-gd inf & vis por, no fluor.

COAL:bnsh blk-blksh rd,ea, frm,sbfiss-sbblky,unevsn,slty i/p g/t,carb SLTST,wdy txt.

SANDSTONE:clr-trnsl,crs-dom v crs,mod wl srt,sa-sr,wk-str i/p pyr cmt,com pyr nod,hd agg i/p,gen lse ti-fr inf & vis por,no fluor.

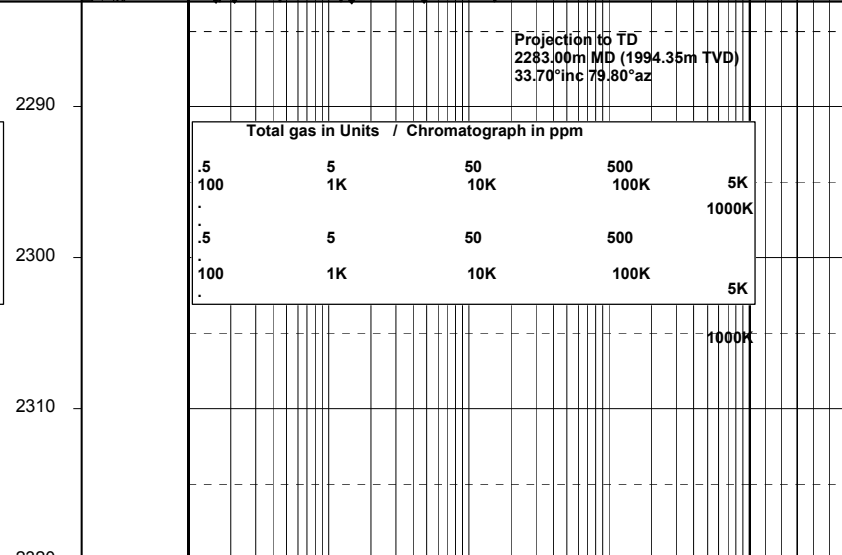
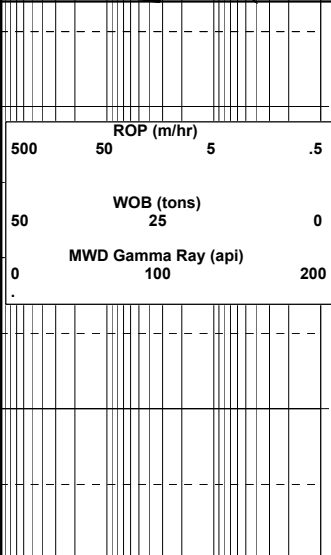
CLAYSTONE:gysh org-v pl org,sft, disp,amor,com bit crushed rock flour.

SANDSTONE:clr-trnsl,crs-dom v crs,mod wl srt,sa-sr,com frac qtz grn,wk pyr cmt,gen lse,cln,fr inf & vis por,no fluor.

SILTSTONE:mod bn-dk yelsh bn,v aren g/t vf SST,mod hd,com rock flour,sbblky.

SANDSTONE:clr-trnsl,f-v crs,pr srt,sa-sr,wk pyr cmt, tr nod pyr,dom lse, gen cln,pr-fr inf & vis por,no fluor.

COAL:bnsh blk-blk,sbvit,brit, sbfiss,ang,slty i/p g/t CARB SLTST pyr lam,tr qtz incl.



Bream A9B reached Total Depth of
 2283.0m MDRT 1994.35m TVDRT
 at 14:15 hours on 03-03-2006

Run Precision Energy Services
 compact shuttle logging from
 MCG-MDN-MPD-MDL-MSS-MAI

7" Production Casing shoe
 set at xxxxm MDRT
 Liner hanger at